

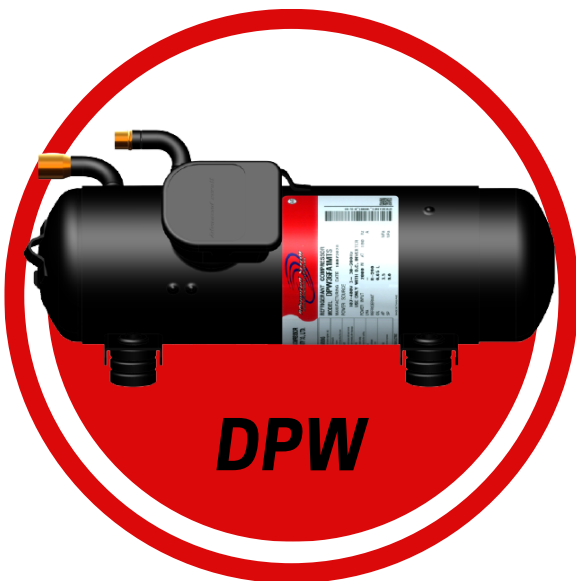


R290 SOLUTION

FOR PLUG-IN CABINET



COMPACT BLDC Horizontal Inverter Scroll



- **R290, the natural**
500g regulation compliance
- **Oval Scroll**
More capacity in the original body
- **Class B, EEI**
Save more energy
- **49 dBA as the lowest noise**
with thermoacoustic shell
- **Less than 180 mm height**
Save more space

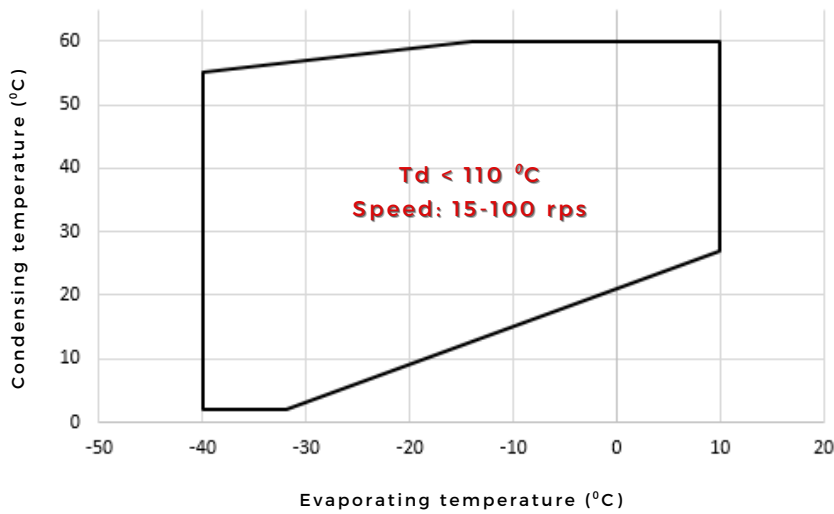
COMPRESSOR MODEL

Model	Stroke (cc)	Condition	Capacity (kW)	Driver	Thermo-Acoustic Shell
DPW22FBAMTS	22	MT	0.5-4.1	SDP060AC400	9G00C329B01
		LT	0.1-1.3		
DPW28FBBMTS	28	MT	0.7-5.2		
		LT	0.2-1.6		
DPW36FBCMTS	36	MT	0.8-6.5		
		LT	0.27-2.3		
DPW42FBDMTS	42	MT	1.0-7.6		
		LT	0.33-2.5		

*Power supply: 3Ø,400V

**MT Condition CT/ET : 45/-10°C , Ts: 20°C , SC: 0K [EN12900] // LT Condition CT/ET : 40/-35°C , Ts: 20°C , SC: 0K [EN12900]

OPERATING ENVELOPE

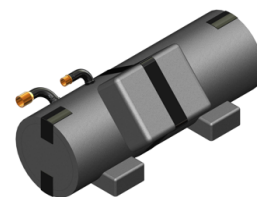


OPTIONAL FEATURE



SCI DRIVER

Built-in envelop control
for unmatched performance and reliability



THERMO-ACOUSTIC SHELL

Up to 10 dB noise reduction
for the best customer comfort

